



WATERSTONE[®] on Augusta

VIBRANT LIFESTYLE, EXCEPTIONAL CARE, DOWNTOWN LIVING.

Assisted Living

Our Rates are based on your choice of suites. Our all-inclusive rate includes, daily meals and nutritious snacks, weekly housekeeping and laundry services. Trained care staff is available 24 hours to assist with your activities of daily living, medication management, scheduled group and medical transportation. We provide an enriching activities program, emergency call response system, and resident sponsored clubs. Maintenance, basic cable, WiFi, and utilities are also included.

One Bedroom Suite

393 Sq Ft



Two Bedroom Suite

759-776 Sq Ft



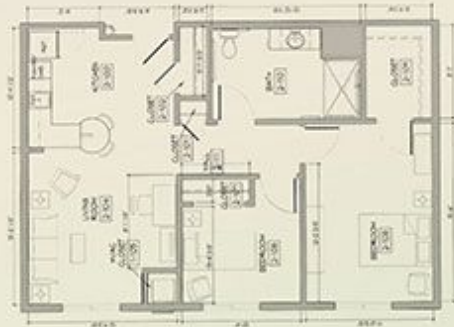
One Bedroom Premium

497-538 Sq Ft



Two Bedroom Premium

819 Sq Ft



Waterstone Plus:

Monthly Fee

An enhanced service level, is available based upon clinical needs, which provides your loved one the extra attention needed to age in place.



WATERSTONE[®] on Augusta


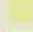



First Floor



Memory Care

Type	Sq Ft
 1 Bedroom Suite	300 - 349
 Shared Suite	495 - 504
 Commons	

Assisted Living

Type	Sq Ft
 1 Bedroom Suite	393
 1 Bedroom Premium	497 - 538
 2 Bedroom Suite	759 - 776
 2 Bedroom Premium	819
 Commons	

Second Floor



Third Floor



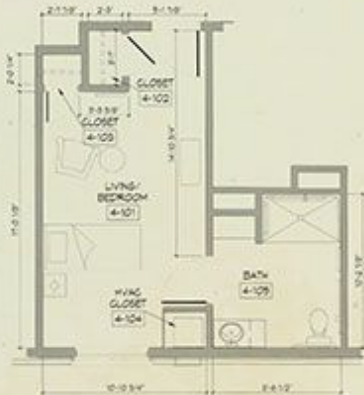
Enhanced Care

Our all-inclusive rate includes your choice of suite design, daily meals and nutritious snacks, weekly housekeeping and laundry services. Trained care staff available 24 hours to assist with your activities of daily living, medication management, scheduled group and medical transportation. We provide an enriching activities program, emergency call response system, and resident sponsored clubs. Apartment maintenance, basic cable, and utilities are also included. Memory Care support combines the services of Assisted Living with safety, and special programming, in an environment to support residents with Alzheimer's and other related dementias.



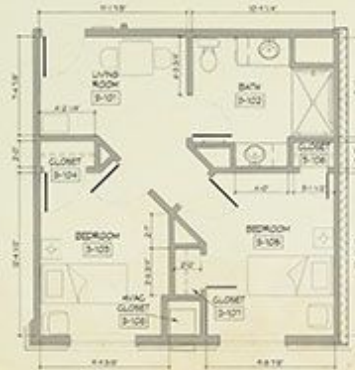
One Bedroom Suite

393 Sq Ft



Shared Suite

759-776 Sq Ft



Neighborhood

Our goal is to provide premier services to our residents by providing an enhanced level of specialized Care. We treat our residents with the respect deserved of their life long achievements. The activities that we plan are productive, and practical. They are designed to give our residents the necessary sense of ownership and pride in their neighborhood.



Downtown Living

Greenville's cityscape balances business, culture and recreation into a brilliant success story of urban revival. This vitality adds life to our active senior living community. We're only one mile away from Falls Park on the Reedy, the South Carolina Governor's School for the Arts and Humanities, and all of the natural beauty surrounding the space. An energy seldom seen in cities this size awaits you. Restaurants, boutiques, libraries, playhouses and more can all be easily accessed. Waterstone on Augusta is proud to call downtown Greenville home. Our community is on the famous Augusta street neighboring downtown.

Amenities

Waterstone on Augusta rose from the ground within one of Greenville's most established, coveted neighborhoods as an entirely new pathway to active senior living. We're a community of private and shared suites with an area dedicated to enhanced care. However, we're more than just a community; we're a living, breathing, vital, neighborhood within the neighborhood. We're an artery of life with courtyards and promenades – conveniently located near the heart of downtown Greenville.

- ◆ Routine Wellness Monitoring by Licensed nurses
 - ◆ Physical, Occupational and Speech Therapy
 - ◆ Personal Care Plan Consultation
 - ◆ Medication Management
 - ◆ Assistance with Activities of Daily Life
 - ◆ Organized Programs, Events and Activities
 - ◆ Housekeeping and Laundry Service
 - ◆ Local Chef Inspired Meals and Snack Bar
-
- ◆ Private and Shared Suites
 - ◆ Utilities, Basic Cable and Wi-Fi
 - ◆ Emergency Response and Fire Safety Systems
 - ◆ Conveniently Located Between Two Major Hospitals





WaterstoneOnAugusta.com 

1004 Augusta St.
Greenville, SC 29605
Ph 864.605.7236